



STRATEGIC PLAN 2018-2023

Our Values



Leadership



Integrity



Respect



Accountability



Commitment



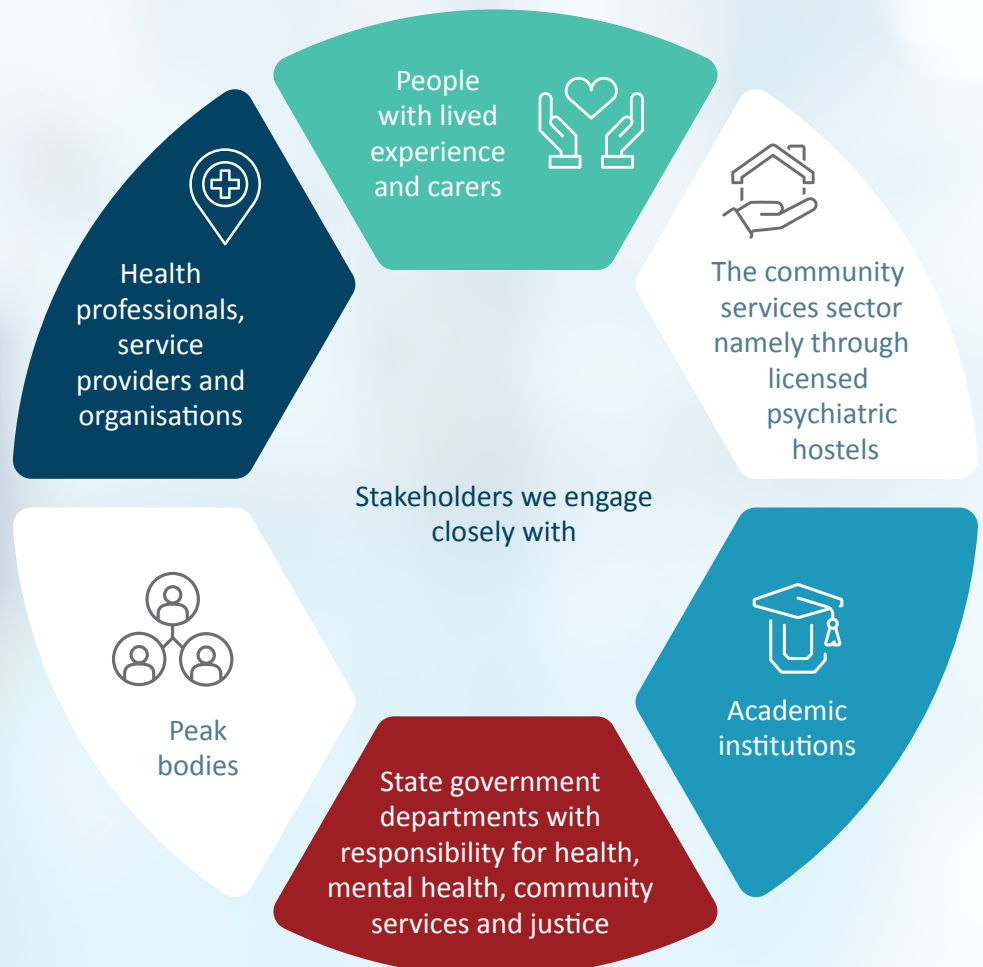
Our Vision

'Mental Health Care to the highest standard.'



Our Mission

'The Chief Psychiatrist aims to ensure that all Western Australians receive the highest standard of mental health treatment and care.'





Strategic Objectives

Striving for a culture of excellence in our workplace that reflects our values

Building and enabling transformative leadership both internally and externally

Build on our strong external partnerships to facilitate safe high quality mental health care

A

Valuing the voice and expertise of people with lived experience and capitalising on the positive benefits gained from diversity through the:

- Consumer voice
- Carer voice
- Aboriginal voice
- CALD voice

by more meaningful co-production, co-design and participation at all levels.

Influencing the delivery of mental health treatment and care to the Western Australian Community by:

Use the Chief Psychiatrist sphere of influence on the National stage, to drive elimination in the use of restrictive practices.

Engage proactively with clinicians, service providers and community managed services to continuously improve within a statutory framework.

Proactively listen to clinicians and service providers to ensure our work adds value.

Create value for clinical services by providing useable data and feedback.

C

T

Enhance collaborative work across teams to draw up on knowledge, data and professional expertise.

Facilitate national mental health strategies in and out of Western Australia.

Increase our presence and visibility at mental health services.

I

Engage the breadth of our staff expertise by ensuring:

Open and honest communication and valuing everybody's voice.

Support continuous professional development.

Establish a network of clinical leaders to drive and sustain high quality mental health care.

Continuously seek opportunities to review stakeholder relationships to assess effectiveness and determine areas for improvement.

O

Make efficient and effective use of our resources:

Allocate our resources where they are needed.

Promote a sustainable work environment.

Harness technology as an enabler and not as a replacement for people, culture and capability.

Take a lead role in working with stakeholders to establish and sustain a robust mental health clinical governance system in WA.

Engage with stakeholders to recognise the duality of the role of the Chief Psychiatrist that is both a partner and a statutory agent under the *Mental Health Act 2014*.

N